

FLY II SYSTEM

| ODLOTY | | | | DEPARTURES | | | |
|--------|-------------------------|---------|-------------|------------|---------|----------|-------------|
| TIME | TO/WA | FLIGHT | AIRLINE | CHECK-IN | GATE | EXPECTED | REMARKS |
| GOZINA | DO/PRZEZ | REJS | LINA | ODPRAWA | WNJSCIE | OCZ GODZ | UWAGI |
| 10:30 | LODZ (LCJ) | OZ 291 | DLT EXPRESS | | | 12:15 | GATE CLOSED |
| 11:35 | BRISTOL (BRS) | FR 8255 | RYANAIR | 9-10 | | | DEPARTED |
| 11:40 | STOCKHOLM SKAVSTA (NYO) | W6 1731 | WIZZ AIR | 11-12 | 6 | | DEPARTED |
| 12:45 | OSLO GARDERMOEN (OSL) | DY 1053 | NORWEGIAN | 7-8 | 7 | | CHECK-IN |
| | | LO 3836 | LOT | 1-2 | | | CHECK-IN |
| | | OS 8512 | AUSTRIAN | 1-2 | | | CHECK-IN |
| 13:00 | WARSAW (WAW) | TP 7072 | TAP | 1-2 | | | CHECK-IN |
| 13:00 | WARSAW (WAW) | OZ 042 | DLT EXPRESS | 9-10 | | | CHECK-IN |
| 13:10 | MUNICH (MUC) | LH 1645 | LUFTANSAA | 1-2 | | | CHECK-IN |
| 13:10 | MUNICH (MUC) | LO 5391 | LOT | 1-2 | | | CHECK-IN |
| 13:40 | DUBLIN (DUB) | FR 1909 | RYANAIR | 11-12 | | | CHECK-IN |
| 14:50 | TURKU (TKU) | W6 1751 | WIZZ AIR | 9-12 | | | |
| 15:10 | LUBECK (LBC) | W6 1675 | WIZZ AIR | 9-12 | | | |
| 15:20 | EINHOVEN (EIN) | W6 1641 | WIZZ AIR | 9-12 | | | |
| 15:30 | FRANKFURT (FRA) | LO 355 | LOT | 1-2 | | | |
| 15:30 | FRANKFURT (FRA) | LH 5731 | LUFTANSAA | 1-2 | | | |



GMI

Odloty • Departures

 Przejścia • Gates 1-18

Check-in

Urząd celny • Customs office

 Kasa biletowa • Ticket desk

 PRM asysta • PRM special assistance

 Gabinet lekarski • First aid

Kaplica • Chapel

 Punkt spotkań • Meeting point

 Bar

Toalety • Toilets

AED defibrylator • AED defibrillator





SEAT STANDARD

REAL





SEAT MEDIUM

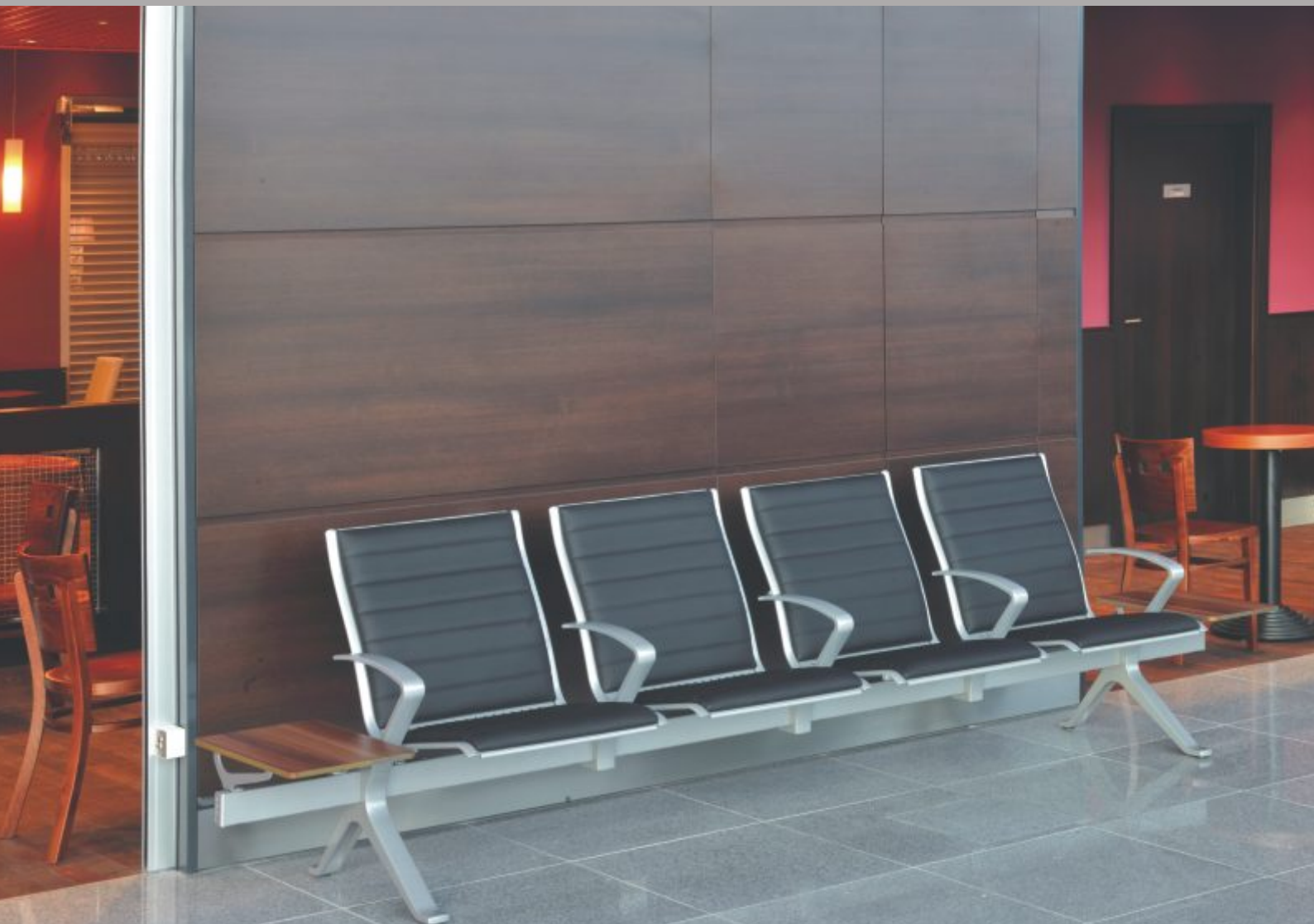
REAL





SEAT COMFORT

REAL





STEEL (OPEN GAP) ▲

COMFORT

PU ▼





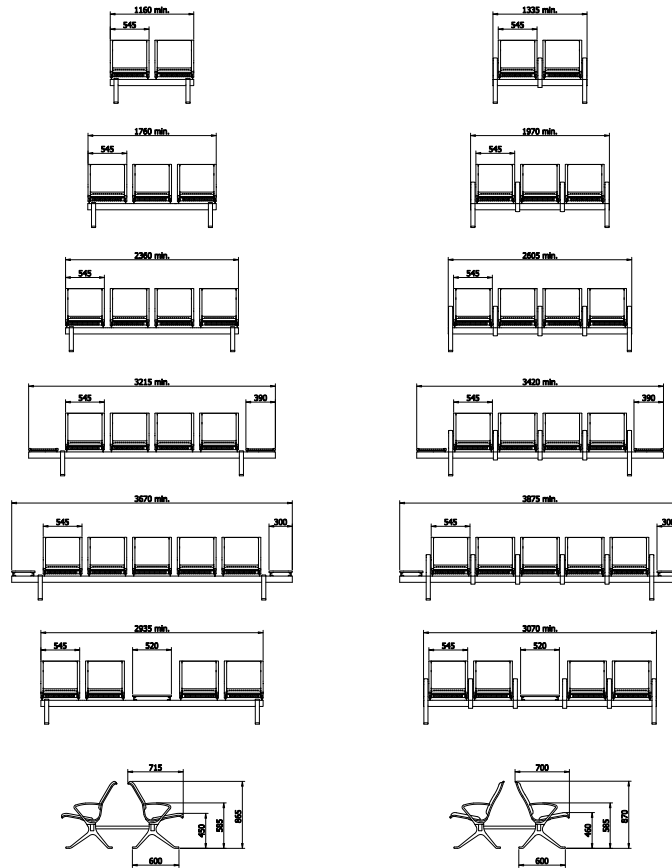
STEEL ▲

STANDARD

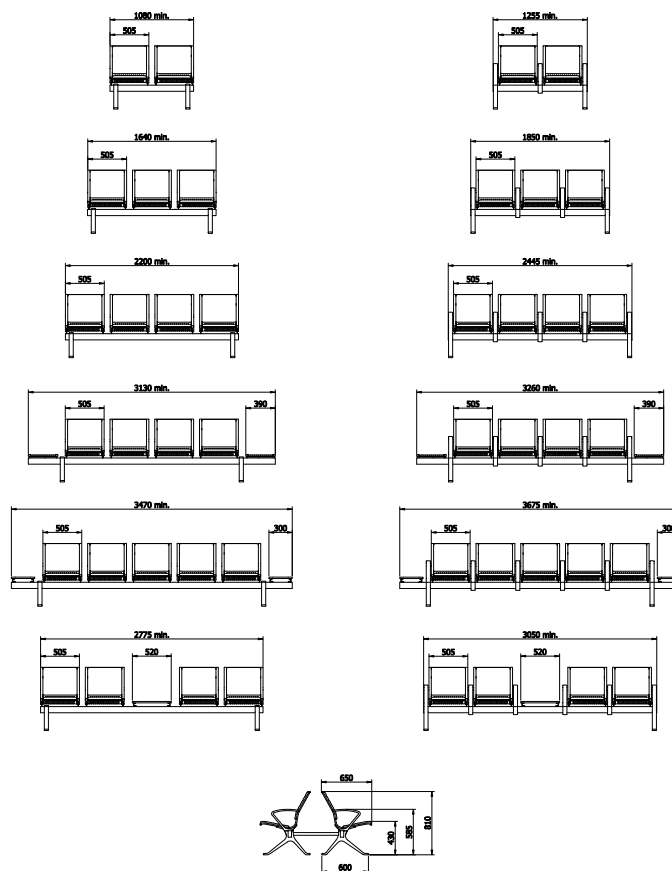
PU ▼



SEAT TYPE MEDIUM AND COMFORT



SEAT TYPE STANDARD



REAL works with ISO 9001: 2008 Quality Management System issued by TUV RHEINLAND. All our products are certified in terms of durability, stability, inflammability, hygiene and ergonomics. All seats have positive opinion for ergonomics from The Medical Institute.

We connect our seating with line and back-to-back connectors.

FINISHINGS

UPHOLSTERIES



VINYL



CAMIRA

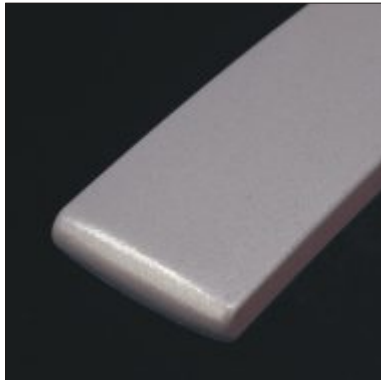


POLYESTHER



PU

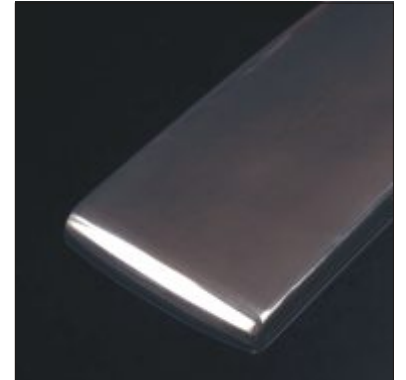
ALUMINIUM FINISHING



POWDER COATED

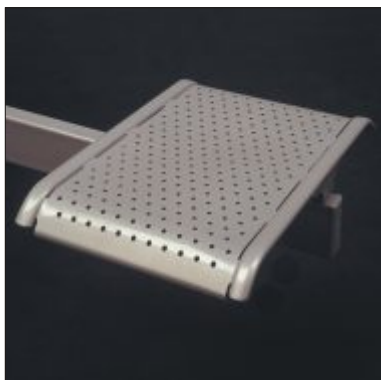


BRUSHED



POLISHED

TABLES



STEEL



HPL OR BLACK PU



HPL WOOD