




FLY II RELAX (RECLINER) PRODUCT DATA SHEET TECHNICAL SPECIFICATION

NR	COMPONENT	DESCRIPTION
1	BEAM	<ul style="list-style-type: none">- 80x 40x 3 mm hardened steel rectangular profile- two die cast solid core aluminum beam caps fixed in permanent way with 2 screws from top and bottom, hidden from the user (covered by leg)- anti-corrosion treatment, shot blasted, double layer powder coated- Double layer epoxy powder coated – 160 microns (color + transparent scratch resistant protective lacquer)- tested load per seat –200 kgs- comply with Tiger QUALICOAT ISO 9227 / ISO 6270-1 



- **full integral molded integral polyurethane with external skin layer for resistance against staining and liquid**
- **polyurethane colored in mass**
- **full surface hardened steel frame embedded inside PU foam on the whole seat and backrest surface (cracking and deformation resistant)**
- **strengthened corners**
- **modelled in 3 dimensions with curved seat and backrest for longtime comfort and ergonomics**
- **PU hardness: min. 65 SHORE DEGREES**
- **Seat and backrest are separate modular elements connected together with 6mm steel brackets fixed with 4 screws M8 size DIN 8.8 per bracket**
- **Assembled to main beam with 2 die cast aluminum clamps and 4 screws M10 x 110 DIN 8.8 with cap nuts**
- **Thickness of seat and backrest in range: 20mm – 36mm**
- **Tested polyurethane density: 380kg/m³**
- **Dimensions of FLY II RELAX system:**
 - a. **Width of the seat: 550mm**
 - b. **Height of the bench: 1000mm**
 - c. **Total depth: 1450mm**
 - d. **Leg support height at lowest point: 250mm**

**SEAT AND
BACKREST TYPE
FLY II RELAX /
FULL INTEGRAL
POLYURETHANE**





- **Die-cast high pressure injected aluminum elements**
- **Solid core elements – not empty hollow spaces inside cross section**
- **Arc-shaped modular armrest**
- **Double layer epoxy powder coated – 160 microns (color + transparent scratch resistant protective lacquer)**
- **Modular system with 2 x M10 screw fixing standard for easy components maintenance**
- **Minimum width of leg and armrest: 50 mm**
- **Middle armrests fixed on amin beam with clamp with 2 x M10 x 100mm DIN8.8 screw**
- **Side armrests and legs fixed on clamp with 2 x M10 x 120mm DIN8.8 screw**
- **Width of leg and armrest – 50mm for increased comfort**





ALUMINUM SYSTEM:

- **Legs**
- **Arms**
- **Clamps**
- **Leg blinders**
- **Beam caps**

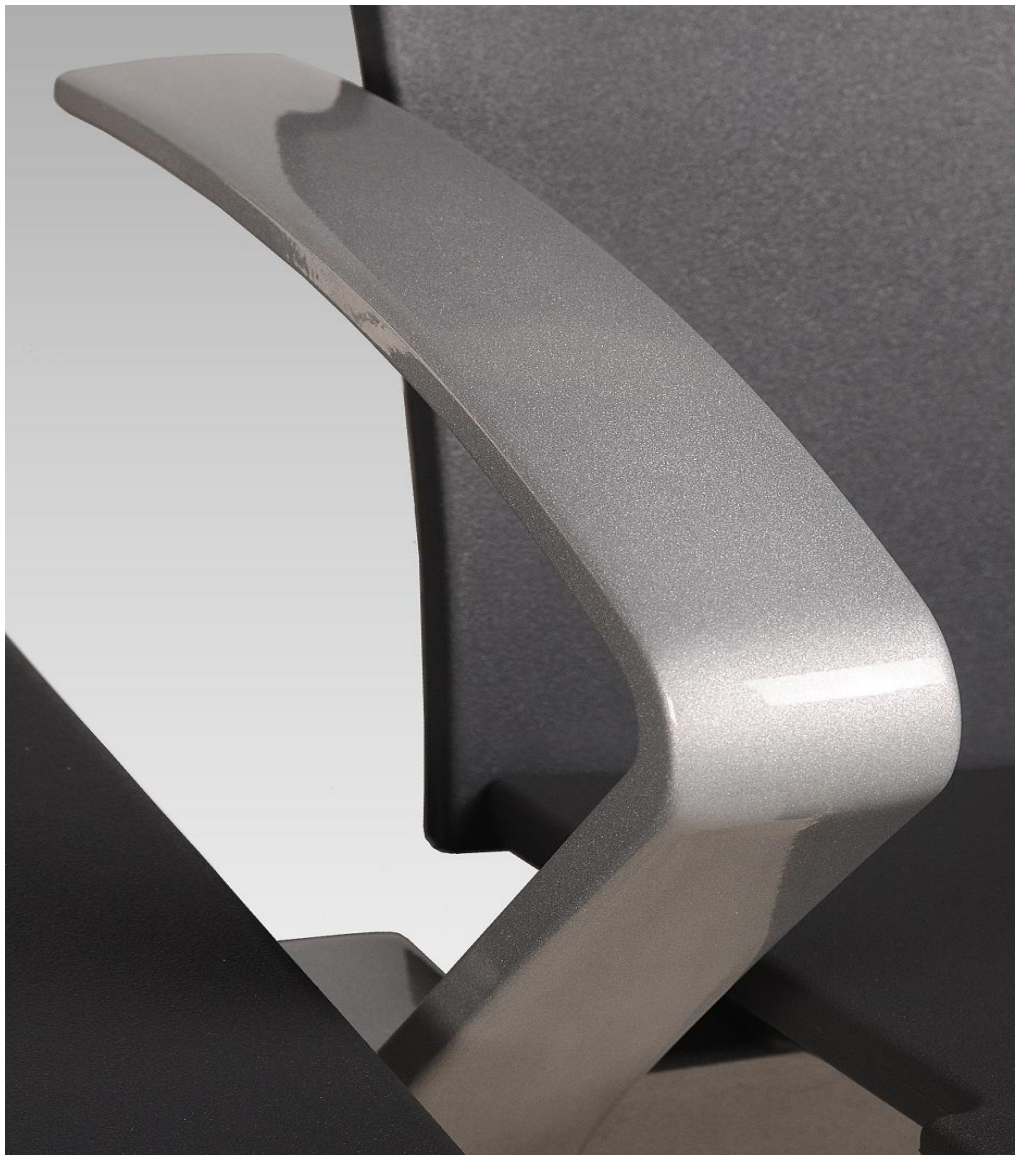
3



4	RUBBER FEET	<ul style="list-style-type: none">- Special non-scratching rubber feet diameter 38mm- feet with floor leveling system 18mm range- non floor scratching- system of stability rows for greater resistance to movement- Air vacuum system under load against unwanted movement 
5	PU TABLE	<ul style="list-style-type: none">- Full integral polyurethane with skin layer- polyurethane colored in mass- Full surface hardened steel frame embedded inside PU foam on the whole seat and backrest surface (cracking and deformation resistant)- strengthened corners- Dimensions of table: 350 x 500mm- Minimum thickness of table: 26mm- PU hardness: min 65 SHORE DEGREES- Fixed to main frame with 2 x M12 x 75mm DIN8.8 screw with caps- Tested polyurethane density: 380kg/m3 



- **TIGER COATING epoxy powder coating system products**
- **Shot – blasting and stain resistance treatment of steel elements for paint increased adherence**
- **Double layer coat: color + protective colorless lacquer (matt or shine finish)**
- **Minimum 80 microns of thickness per layer = 160 microns total for 2 layers**
- **Salt resistance according to – ISO 9227**
- **Humidity resistance according – ISO6270-1**
- **Cupping according to ISO1520**
- **Cross cut according to ISO2409**
- **Mandrel bending according to ISO1519**
- **Ball Impact test according to ASTM D 2794**



**EPOXY DOUBLE
POWDER
COATING OF
STEEL AND
ALUMINIUM
COMPONENTS**



7	POWER MODULES	<u>POWER MODULES CONFIGURATIONS:</u>	
		USB AND EU STANDARD SOCKETS BERKER K5 STAINLESS STEEL:	
		NAME OF ITEM	TECHNICAL INFORMATION
		PLUG	<ul style="list-style-type: none"> - 3 PIN PLUG EU STANDARD - MAXIMUM CIRCUIT LOAD 16A - MAXIMUM VOLTAGE – UP TO 230 V
		ELECTRIC SOKCET	<ul style="list-style-type: none"> - EU STANDARD SOCKETS WITH GROUNDING - CURRENT – UP TO 16 A - MAXIMUM VOLTAGE – UP TO 230 V
		USB	<ul style="list-style-type: none"> - INTEGRATED USB CHARGER - OUTPUT 5V / 2.1A / DC - INPUT – POWER VOLTAGE- 100 – 240 V - AC – 50/60HZ
CABLE	<ul style="list-style-type: none"> - OMYzo - 3 X 1,5 MM2 - UP TO 300V - CE 03827 		
CABLE PROTECTIVE CHANNEL	<ul style="list-style-type: none"> - ROUND DIAMETER 12MM - MATERIAL PA6 - 750N - HALOGEN FREE - INFLAMMABLE - SELF EXTINGUISHING - EN 61386-1 		





8	CERTIFICATION	<p>RESISTANCE, DURABILITY, STABILITY according to the norms:</p> <p>1. CERTIFICATE NR 299/14/W EN 16139:2013 EN 1728:2012 EN: 1022:2007 EN 12727:2004</p> <p>B. INFLAMMABILITY (FLAME RETANDANT) as per the norms:</p> <p>2. (CERTIFICATE NR 2/11/P) - EN 1021-1:2007 3. (CERTIFICATE NR 2/11/P) - EN 1021 -2:2007 4. CERTIFICATE 01241/15/Z00NP - EN 13501 5. CERTIFICATE NR 18724-15 - AM18 (France) 6. CERTIFICATE NR 11/14/P - BS5852 – source 0,1 and 5 (UK)</p> <p>C. TEST REPORT FOR EPOXY POWDER COATING QUALITY</p> <p>7. CERTIFICATE NUMBER 90453 ISO2409 ISO2815 ISO1520 ISO1519 ASTM D 2794 ISO6270-1 ISO9227</p> <p>D. STAINING RESISTANCE CERTIFICATE</p> <p>8. CERTIFICATE NUMBER 1/14/T EN12720 + A1:2014</p> <p>E. DISINFECTION CERTIFICATE</p> <p>9. CERTIFICATE NR 1/20/T</p> <p>F. TEST REPORT FOR BEAM AND LEG LOAD</p> <p>10. TEST REPORT DATED 24.03.2017 EN 12727</p> <p>G. PU DENSITY</p> <p>11. TEST REPORT DATED 23.01.2018 ISO 845:2010</p> <p>H. OIL RESISTANCE AND COMPRESSION</p> <p>12. CERTIFICATE NR 202/1/BL/2011 EN ISO 868:2005 ISO1817:2011 / AP1:2002</p> <p>I. UV LIGHT RADIATION RESISTANCE</p>
---	---------------	---



		<p>13. CERTIFICATE NR 202/BL/2011 ISO 20105 -A02</p> <p>J. THICKNESS, COMPRESSION, MATERIAL EXAMINATION 14. CERTIFICATE NR SDHL1810023740FT ISO845:2006 ISO8307:2007 ISO 8067:2008 ISO1798:2008 ASTM D638-14</p> <p>K. BEAM – TENSILE MATERIAL TEST 15. CERTIFICATE NR SDHL1810023752FT ISO6892-1:2016</p> <p>L. ISO 9001 QUALITY MANAGEMENT SYSTEM CERTIFICATE</p> <p>O. SALT CHAMBER TEST 200 HOURS FOR METAL COMPONENTS - ACCORDING TO NORM ISO 9227 16. TEST REPORT NR 28.2018</p>
9	SERVICE AND WARRANTY	<ul style="list-style-type: none">- MATERIAL AND MANUFACTURING CONSTRUCTION STRUCTURE DEFECTS WARRANTY – 10 YEARS- SURFACE OF THE SEAT WARRANTY – 3 YEARS- AVAILABILITY OF SPARE PARTS FOR 30 YEARS- IMMEDIATE PROBLEM SOLVING PROGRAM- AFTER SALES SUPPORT 24/7