




FLY II 3D

PRODUCT DATA SHEET TECHNICAL SPECIFICATION

NR	COMPONENT	FLY II 3D DESCRIPTION
1	BEAM	<ul style="list-style-type: none">- 8x 4x 3 mm hardened steel rectangular profile grade S235JRH class 1- two die cast solid core aluminum beam end caps fixed in permanent way with 2 screws from top and bottom- iron phosphate, shot blasted, double layer powder coated (color + transparent protective lacquer)- tested load per seat –200 kgs- salt chamber test for min 200 hours 

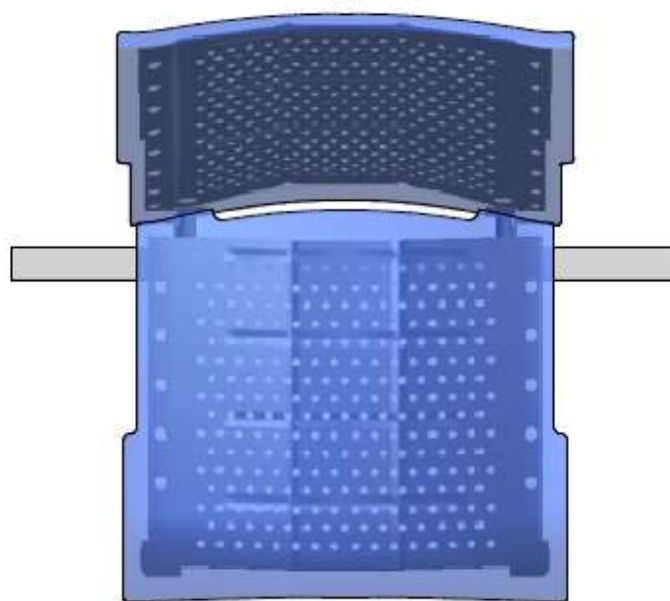


- full integral molded polyurethane with external skin layer
- polyurethane colored in mass
- full surface hardened steel frame class S235 / DC1 embedded inside PU foam on the whole seat and backrest surface
- strengthened corners
- modelled in 3 dimensions with curved seat and backrest for longtime comfort
- PU hardness: min. 65 SHORE DEGREES
- Seat and backrest are separate modular elements
- Assembled to main beam with 2 screws M12 x 80 DIN 8.8
- Minimum thickness of seat and backrest: 20mm
- Minimum polyurethane density: 380kg/m³
- Width 545mm / 600 mm between armrests center (aisle)
- 10mm gap between seat and backrest for crumbs and liquid channeling



**SEAT AND
BACKREST TYPE
FLY II 3D / FULL
INTEGRAL
POLYURETHANE**

2





- **Die-cast high pressure injected aluminum elements**
- **Solid core elements – not empty spaces inside**
- **Arc-shaped modular armrest**
- **Chromated before coating for better adherence of paint and durability**
- **Double layer epoxy powder coated (color + protective lacquer) – 160 microns**
- **Modular system with 2 x M10 screw fixing standard for easy components maintenance**
- **Minimum width of leg and armrest: 50 mm**
- **Middle armrests fixed on amin beam with clamp with 2 x M10 x 100mm DIN8.8 screw**
- **Side armrests and legs fixed on clamp with 2 x M10 x 120mm DIN8.8 screw**





ALUMINUM SYSTEM:

- **Legs**
- **Arms**
- **Clamps**
- **Leg blinders**
- **Beam caps**

3



4	RUBBER FEET	<ul style="list-style-type: none">- Special non-scratching rubber feet diameter 38mm- feet with floor leveling system 18mm range- non floor scratching- system of stability rows for greater resistance to movement- Air vacuum system under load against unwanted movement  A close-up photograph of a single rubber foot. It is a dark, circular, textured disc attached to a white, curved plastic base. The foot is designed for stability and floor protection.
5	PU TABLE	<ul style="list-style-type: none">- Full integral polyurethane with skin layer- polyurethane colored in mass- full surface hardened steel frame class S235 / DC1 embedded inside PU foam on the whole seat and backrest surface- strengthened corners- Dimensions: 350 x 500mm- Minimum thickness of table: 26mm- PU hardness: min 65 SHORE DEGREES- Fixed to main frame with 2 x M12 x 75mm DIN8.8 screw- Minimum polyurethane density: 380kg/m3  A photograph of a rectangular, light-colored table with a dark, textured surface. The table is shown from a low angle, highlighting its thickness and the way it is attached to a white metal frame.



6	EPOXY DOUBLE POWDER COATING	<ul style="list-style-type: none"> - TIGER COATING epoxy powder coating system - Shot – blasting and iron phosphating of steel elements for paint increased adherence - Chromating of aluminum elements for better adherence of paint, stain resistance and durability - Double layer coat: color + protective colorless lacquer (matt or shine) - Minimum 80 microns of thickness per layer = 160 microns total - 500h salt test – ISO 9227 - 500h humidity test – ISO6270-1 - Cupping test ISO1520 - Cross cut test: ISO2409 - Mandrel bending test ISO1519 - Ball Impact test ASTM D 2794 
7	DIMENSIONS	<ul style="list-style-type: none"> - Seat width – 530mm - Backrest width – 530mm - Total height – 895mm - Total depth – 700 mm - Floor to seat edge – 420 mm - Leg and armrest width: min 50mm
8	CONNECTORS	<p>Product supplied with back-to- back connectors fixed to the main beam with 2 DIN8.8 screws, allowing to connect 2 units back-to-back– detachable</p> 



FOR UNITS STANDING BACK TO THE WALLS, IT IS POSSIBLE TO ORDER WALL SPACER ENSURING THE BACKRESTS ARE NOT TOUCHING THE WALL, ENSURING PROPER DISTANCE BETWEEN WALLS AND PASSENGER HEADS TO PREVENT INJURIES



9 WALL SPACERS



DISABLED PRM SEAT EXTENSION SET CONSISTS OF:

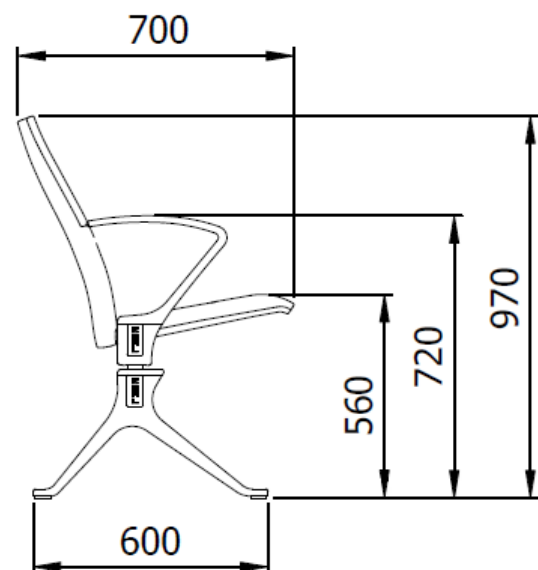
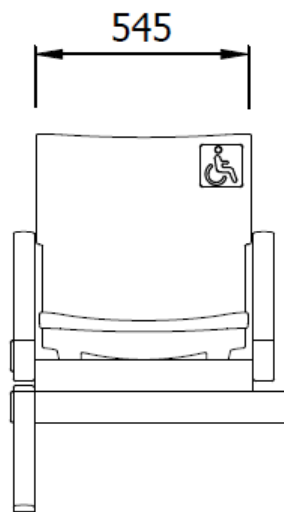
- 1. 80 X 40 MM HEIGHTENING BEAM**
- 2. PRM PU LOGOTYPE EMBEDDED IN BACKREST SURFACE (TWO COLORS)**
- 3. TWO M10 x 160 DIN 8.8 SCREWS**
- 4. EACH PRM SEAT MUST BE EQUIPPED WITH 2 ARMRESTS ON SIDES**

FEATURTES OF PRM SEAT EXTENSION:

- PRM SEAT IS 8 CM HIGHER THAN STANDARD SEAT
- PRM SEAT HAS PROPER LOGOTYPE ON THE BACKREST – LOGOTYPE CAN BE IN 2 COLORS – BACKGROUND COLOR CHOSEN BY RAL SET AND WHITE DISABILITY LOGO.



9 **PRM SEAT
EXTENSION**







11	CERTIFICATION	<p>RESISTANCE, DURABILITY, STABILITY according to the norms:</p> <p>1. CERTIFICATE NR 218/11/W EN 15373:2007 EN 1728:2004 EN: 1022:2007 EN 12727:2004</p> <p>B. INFLAMMABILITY (FLAME RETANDANT) as per the norms:</p> <p>2. (CERTIFICATE NR 2/11/P) - EN 1021-1:2007 3. (CERTIFICATE NR 2/11/P) - EN 1021 -2:2007 4. CERTIFICATE 01241/15/Z00NP - EN 13501 5. CERTIFICATE NR 18724-15 - AM18 (France) 6. CERTIFICATE NR 11/14/P - BS5852 – source 0,1 and 5 (UK)</p> <p>C. POSITIVE OPINION OF MEDICAL INSTITUTE FOR THE ERGONOMICS OF SEATING</p> <p>7. CERTIFICATE NR 21/2011</p> <p>D. TEST REPORT FOR EPOXY POWDER COATING QUALITY</p> <p>8. CERTIFICATE NUMBER 59/90453 ISO2409 ISO2815 ISO1520 ISO1519 ASTM D 2794 ISO6270-1 ISO9227</p> <p>E. STAINING RESISTANCE CERTIFICATE</p> <p>9. CERTIFICATE NUMBER 1/14/T EN12720 + A1:2014</p> <p>F. DISINFECTION CERTIFICATE</p> <p>10. CERTIFICATE NR 1/20/T</p> <p>G. TEST REPORT FOR BEAM AND LEG LOAD</p> <p>11. TEST REPORT DATED 24.03.2017 EN 12727</p>
----	---------------	--



H. PU DENSITY

12. TEST REPORT DATED 23.01.2018

ISO 845:2010

I. OIL RESISTANCE AND COMPRESSION

13. CERTIFICATE NR 202/1/BL/2011

EN ISO 868:2005

ISO1817:2011 / AP1:2002

J. UV LIGHT RADIATION RESISTANCE

14. CERTIFICATE NR 202/BL/2011

ISO 20105 -A02

K. THICKNESS, COMPRESSION, MATERIAL EXAMINATION

15. CERTIFICATE NR SDHL1810023740FT

ISO845:2006

ISO8307:2007

ISO 8067:2008

ISO1798:2008

ASTM D638-14

L. BEAM – TENSILE MATERIAL TEST

16. CERTIFICATE NR SDHL1810023752FT

ISO6892-1:2016

M. POWER MODULES CERTIFICATION:

17. CERTIFICATE KB19109055E

EN IEC 61000-6-1:2019

EN IEC 61000-6-3:2019

A1:2011/AC:2012

18. CERTIFICATE I/SETC.002420190711

2014/35/EU

IEC 60884-1:2006

N. ISO 9001 QUALITY MANAGEMENT SYSTEM CERTIFICATE

O. SALT CHAMBER TEST 200 HOURS FOR METAL COMPONENTS

- ACCORDING TO NORM ISO 9227

19. TEST REPORT NR 28.2018



9	POWER SOLUTIONS	USB AND UK / EU STANDARD SOCKETS: SERIES OF ELECTRIC COMPONENTS :BERKER K5 STAINLESS STEEL		
		No.	NAME OF ITEM	TECHNICAL INFORMATION
		1	PLUG	<ul style="list-style-type: none"> - 3 PIN PLUG EU STANDARD - MAXIMUM CIRCUIT LOAD 16A - MAXIMUM VOLTAGE – UP TO 250 V
		2	ELECTRIC SOKCET BERKER K5	<ul style="list-style-type: none"> - UK / EU STANDARD SOCKETS - CURRENT – UP TO 16 A - MAXIMUM VOLTAGE – UP TO 250 V
		3	USB – BERKER K5	<ul style="list-style-type: none"> - DOUBLE USB CHARGER - OUTPUT 5V / 3A / DC - INPUT – POWER VOLTAGE- 100 – 240 V - AC – 50/60HZ
		4	CABLE	<ul style="list-style-type: none"> - OMYzo - 3 X 1,5 MM2 - 300V - CE 03827
		5	CABLE CHANNEL	<ul style="list-style-type: none"> - ROUND DIAMETER 15MM - MATERIAL PA6 - 750N - HALOGEN FREE - INFLAMMABLE - SELF EXTINGUISING - EN 61386-1



UK STANDARD SOCKET BERKER K5:



USB STANDARD SOCKET BERKER K5





ELECTRIC TRIPLE PANEL ON THE TABLE:



- 13 SERVICE AND WARRANTY**
- **10 YEARS OF FULL MANUFACTURER WARRANTY FROM FINAL TAKEOVER DATE**
 - **AVAILABILITY OF SPARE PARTS FOR 30 YEARS**
 - **IMMEDIATE PROBLEM SOLVING PROGRAM**
 - **AFTER SALES SUPPORT 24/7**

14 PACKING

PACKING INFORMATION – SEATS ARE PACKED IN WOODEN PALLET BOXES WITH DIMENSIONS 1090 X 880 X 2100MM.

ONE BOX HOLDS:

A. 28 SEATS FOR MODELS: FLY II 3D

ONE 40' HC SEA FREIGHT CONTAINER CAN HOLD:

B. 728 SEATS FOR MODELS: FLY II 3D TOGETHER WITH LEGS, ARMRESTS, SCREWS, POWER COMPONENTS AND RELEVANT BEAMS